

DUNGEONS & DRAGONS

Character Sheet

Player Name /RPGA Number

11

Level

Liana Sunstar

Good Female Eladrin Mage

23 Age 5' 7" Height 145 lb. Weight Medium Size Corellon Deity

26000

Total XP Next Level at: 39000

Defenses

25 AC	20 FORT	26 REF	28 WILL
-----------------	-------------------	------------------	-------------------

Conditional Bonuses:

Hit Points

Max HP (Bloodied 30) 61	Temp HP
---	---------

Current Hit Points

Healing Surges

Surge Value Surges/day

15	6
----	---

Surges Left

Current Conditions:

Combat Statistics and Senses

Initiative

9

Conditional Modifiers

Speed

6

Special Movement

Passive Insight

19

Passive Perception

24

Special Senses
Low-light

Action Points

Action Points Milestones Action Points

0	1
1	2
2	3

Effect: Gain a standard action this turn.

Special: You are reset to one action point when you take an extended rest. You gain an action point each milestone.

Second Wind (one per encounter)

☐ Used

Effect: You spend a healing surge and regain hit points equal to your surge value. You gain a +2 bonus to all defenses until the start of your next turn.

Death Saving Throw Failures

<input type="checkbox"/>	<input type="checkbox"/>	<input type="checkbox"/>
--------------------------	--------------------------	--------------------------

Saving Throw Mods

0

+5 Saving Throws against charm effects

Resistances

Current Conditions and Effects

Basic Attacks

Melee

Utility Staff +3

9

Strength vs. AC

1d8+2

Damage

Ranged

Unarmed

5

Dexterity vs. AC

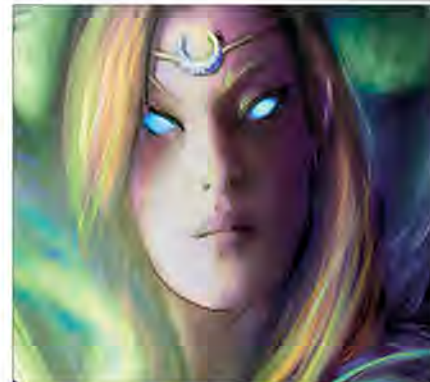
1d4

Damage

Language(s) known

Common, Elven

Portrait



Ability	Score	Check
STR Strength	9	4
CON Constitution	11	5
DEX Dexterity	11	5
INT Intelligence	22	11
WIS Wisdom	14	7
CHA Charisma	20	10

Skills

Skill	Assoc. Ability	Trained	Score
Acrobatics	Dexterity		5
Arcana	Intelligence	✓	18
Athletics	Strength		6
Bluff	Charisma		14
Diplomacy	Charisma		12
Dungeoneering	Wisdom	✓	12
Endurance	Constitution		5
Heal	Wisdom		7
History	Intelligence	✓	18
Insight	Wisdom		9
Intimidate	Charisma		10
Nature	Wisdom	✓	12
Perception	Wisdom	✓	14
Religion	Intelligence		11
Stealth	Dexterity		9
Streetwise	Charisma		10
Thievery	Dexterity		5

Liana Sunstar

Player Name

Character Name



Racial Features

Trance Meditate aware 4 hours instead of sleep.	Eladrin Will +1 Will; +5 to saving throws against charm.	Arcana Bonus
Eladrin Weapon Proficiency Proficient with longsword.	Fey Step Use fey step as an encounter power.	History Bonus
Eladrin Education Training in any one additional skill.	Fey Origin Your origin is fey, not natural	

Class/Other Features

Enchantment Apprentice +2 to allowed maximum distance of forced movement from arcane enchantment powers' pulls, pushes, or slides	Expert Mage Gain Expert Mage	Enigmatic Action You gain a benefit associated with the school of magic for which you have the Master Mage benefit.
Mage Cantrips Choose three cantrips.	Enchantment School Expert Become an expert in the Enchantment School	
Mage's Spellbook Gain mage's spellbook	Enchantment Expert +2 bonus to Bluff checks and Diplomacy checks.	Enchantment Action Action point spent for extra action: slide each enemy within 2 sq. a number of squares up to your Charisma mod
Magic Missile Gain the magic missile power.	Illusion Expert You gain a +2 bonus to Bluff checks and Stealth checks.	Enigmatic Spellcasting Gain the enigmatic spellcasting power.
Illusion Apprentice Target hit w/ arcane illusion power takes a -2 penalty to next attack roll it makes vs. you before your next turn's end	Illusion School Expert Become an expert in the Illusion School	
	Master Mage Gain Master Mage	
	Enchantment School Master Become a master in the Enchantment School	

Feats

Staff Expertise While using a staff as a weapon or implement: +1/2/3 to attack rolls, ranged attacks don't provoke opportunity attacks, +1 reach	Beguiling Enchantment Enemy -2 to attacks after you hit it with charm power	Spell Focus -2 to saves against your wizard spells
Improved Initiative +4 to initiative checks	Twist the Arcane Fabric Fey step an ally out of your power's area of effect	
Unarmored Agility +2 AC while wearing cloth armor or no armor	Improved Defenses +1/2/3 bonus (by tier) to Fortitude, Reflex, and Will.	

Player Name

Character Details

Adventuring Company

Theme

Background

Myth Drannor

This ancient elven kingdom was once the foremost power north of the Sea of Fallen Stars before it fell into darkness seven centuries ago. It remained a monster-haunted ruin for hundreds of years until the sun and moon elves reclaimed the kingdom shortly before the Year of Blue Fire. Myth Drannor has flourished since its refounding.

Personality Traits

Aloof, deliberate, manipulative

Companions and Allies

Mannerisms and Appearance

Slim, with finely-made robes

Session and Campaign Notes

Other Notes

Liana Sunstar

Character Name



Equipment

Head Slot

Diadem of Acuity (heroic tier)

Neck Slot

Amulet of Protection +3

Arm Slot

Hand Slot

Ring Slot

Ring Slot

Off Hand Slot

Main Hand

Utility Staff +3

Waist Slot

Body Slot

Sylvan Cloth Armor (Basic...

Tattoo Slot

Feet Slot

Ki Slot

Other Equipment

Adventurer's Kit
Potion of Healing (heroic tier)

Total Weight (lbs.)

37

Carrying Capacity (lbs.)

Normal 90

Heavy 180

Max 450

Coins and Other Wealth
16 Platinum, 35 Gold

Melee Basic Attack

At-Will ♦ Standard action

Utility Staff +3: +9 vs. AC, 1d8+2 damage

Melee weapon **Target:** One creature

You resort to the simple attack you learned when you first picked up a melee weapon.

Keyword: Weapon

Attack: Strength vs. AC

Hit: 1[W] + Str modifier (-1) damage.

Level 21: 2[W] + Str modifier (-1) damage.

Additional Effects

Ranged Basic Attack

At-Will ♦ Standard action

Unarmed: +5 vs. AC, 1d4 damage

Ranged weapon **Target:** One creature

You resort to the simple attack you learned when you first picked up a ranged weapon.

Keyword: Weapon

Attack: Dexterity vs. AC

Hit: 1[W] + Dex modifier (+0) damage.

Level 21: 2[W] + Dex modifier (+0) damage.

Additional Effects

Fey Step

Encounter ♦ Move Action

Personal

You step through the boundary between the planes, disappearing for a moment before reappearing somewhere else.

Keyword: Teleportation

Effect: Teleport up to 5 squares.

Additional Effects

Phantom Chasm

Daily ♦ Standard action

Utility Staff +3: +16 vs. Will, 2d6+9 damage

Area burst 1 within 10 squares **Target:** Each enemy in the burst

Your enemies shriek in terror as, at least in their mind's eye, a bottomless pit opens beneath their feet.

Keywords: Arcane, Illusion, Implement, Psychic, Zone

Attack: Intelligence vs. Will

Hit: 2d6 + Int modifier (+6) psychic damage, and the target falls prone. The target is immobilized until the end of its next turn.

Miss: Half damage, and the target falls prone.

Effect: The burst creates a zone that lasts until the end of the encounter. Any enemy that enters the zone falls prone.

Additional Effects

Sleep

Daily ♦ Standard action

Utility Staff +3: +16 vs. Will, damage

Area burst 2 within 20 squares **Target:** Each creature in the burst

You exert your will against your foes, seeking to overwhelm them with a tide of magical weariness.

Keywords: Arcane, Charm, Enchantment, Implement

Attack: Intelligence vs. Will

Hit: The target is slowed (save ends).

First Failed Saving Throw: The target is unconscious instead of slowed (save ends).

Miss: The target is slowed (save ends).

Additional Effects

Grasping Shadows

Encounter ♦ Standard action

Utility Staff +3: +16 vs. Will, 1d8+9 damage

Area burst 1 within 10 squares **Target:** Each creature in burst

At your command, the shadows reach out, grab hold of your foes, and wreath the area in darkness.

Keywords: Arcane, Illusion, Implement, Psychic

Attack: Intelligence vs. Will

Hit: 1d8 + Int modifier (+6) psychic damage, and target is slowed until the end of your next turn.

Effect: Shadows writhe in the designated area and continue until the end of your next turn. Any creature that enters the area of the grasping shadows takes psychic damage equal to your Int modifier (+6) and is slowed until the end of its next turn.

Additional Effects

Charm of Misplaced Wrath

Encounter ♦ Standard action

Utility Staff +3: +16 vs. Will, damage

Ranged 10 **Target:** One enemy

You bend your foe's mind, filling it with wrath even as you twist its senses.

Keywords: Arcane, Charm, Enchantment, Implement

Attack: Intelligence vs. Will

Hit: You slide the target up to 3 squares. The target is then dazed until the end of your next turn.

Effect: The target makes a basic attack against a creature of your choice as a free action. The basic attack gains a +2 power bonus to the damage roll.

Additional Effects

Hypnotism

At-Will ♦ Standard action

Utility Staff +3: +16 vs. Will, damage

Ranged 10 **Target:** One enemy

Your piercing gaze and whispered word let you seize momentary control of your enemy's mind.

Keywords: Arcane, Charm, Enchantment, Implement

Attack: Intelligence vs. Will

Hit: Choose one of the following effects:

- * The target uses a free action to make a melee basic attack against a creature of your choice, with a +4 power bonus to the attack roll.
- * You slide the target up to 3 squares.

Additional Effects

Beguiling Strands

At-Will ♦ Standard action

Utility Staff +3: +16 vs. Will, 6 damage

Close blast 5 **Target:** Each enemy in the blast

A strand of scintillating colors and gleaming lights clouds your enemies' minds and forces them to move away.

Keywords: Arcane, Charm, Enchantment, Implement, Psychic

Attack: Intelligence vs. Will

Hit: Int modifier (+6) psychic damage, and you push the target up to 3 squares.

Additional Effects

Prestidigitation

At-Will ♦ Standard action

Ranged 2

You perform an amusing magical trick, such as creating a dancing wisp of light, freshening a wilting flower, making a coin invisible, or warming a cold drink.

Keyword: Arcane

Effect: Use this cantrip to accomplish one of the effects given below:

- * Change the color of items in 1 cubic foot.
- * Create a harmless sensory effect, such as a shower of sparks, a puff of wind, faint music, or a strong odor.
- * Clean or soil items in 1 cubic foot.
- * Instantly light (or snuff out) a candle, a torch, or a small campfire.
- * Chill, warm, or flavor up to 1 pound of nonliving material for up to 1 hour.
- * Make a small mark or symbol appear on a surface for up to 1 hour.
- * Produce out of nothingness a small item or image that exists until the end of your next turn.
- * Make a small, handheld item invisible until the end of your next turn.

Special: You can have as many as three prestidigitation effects active at one time. Nothing you create with this cantrip can deal damage, serve as a weapon or a tool, or hinder another creature's actions. This cantrip cannot duplicate the effect of any other power.

Additional Effects

Wizard Utility

Suggestion

Encounter ♦ Free Action

Personal

You weave arcane power through your words, infusing each phrase with persuasive magic.

Keyword: Arcane

Trigger: You make a Diplomacy check.

Effect: You make an Arcana check instead, using that result to determine the outcome of the Diplomacy check.

Additional Effects

Wizard Utility

Used ☐

Mage Hand

At-Will ♦ Minor Action

Ranged 5

You gesture toward an object nearby, and a spectral floating hand lifts the object into the air and moves it where you wish.

Keywords: Arcane, Conjunction

Effect: You conjure a spectral, floating hand in an unoccupied square within range. The hand lasts until the end of your next turn or until you use this power again. If you are holding an object when you use this power, the hand can move the object into a pack, a pouch, a sheath, or a similar container and simultaneously move any one object carried or worn anywhere on your body into your hand. While the hand persists, you can take the following actions.

Minor Action: The hand picks up or manipulates an object weighing 20 pounds or less. It can hold only one object at a time.

Move Action: The hand moves up to 5 squares in any direction, carrying the object it holds.

Free Action: The hand drops the object it is holding.

Sustain Minor: The hand persists until the end of your next turn.

Additional Effects

Wizard Utility

Used ☐

Magic Missile

At-Will ♦ Standard action

Ranged 20 **Target:** One creature

A glowing blue bolt of magical energy hurtles from your finger and unerringly strikes your target.

Keywords: Arcane, Evocation, Force, Implement

Effect: 2 + Int modifier (+6) force damage. Level 11: 3 + Int modifier (+6) force damage.

Special: If the implement used with this power has an enhancement bonus, add that bonus to the damage. In addition, you can use this power as a ranged basic attack.

Additional Effects

Wizard Attack 1

Memory to Mist

Daily ♦ Minor Action

Ranged 2 **Target:** One creature that is not involved in combat and that is lower level than you

Your magic settles into a creature's mind, causing it to forget what it just witnessed.

Keyword: Arcane

Effect: The creature forgets everything that happened in the past 10 minutes and for the next 1 minute.

Additional Effects

Wizard Utility 2

Used ☐

Instant Friends

Daily ♦ Standard action

Ranged 10 **Target:** One creature

Your magic infuses your words with the power of persuasion, clouding a creature's mind and tricking it into thinking of you as its dearest friend.

Keywords: Arcane, Charm, Enchantment

Requirement: You must use this power outside a combat encounter.

Effect: The target makes a saving throw. The saving throw has a +5 bonus if the target is the same level as you or a higher level. It takes a -5 penalty if the target is a lower level than you or does not have a level.

If the saving throw succeeds, this power has no effect. The target is aware that you used this power on it if it is the same level as you or a higher level. Otherwise, it does not know you used this power.

On a failed saving throw, the target treats you as a trusted friend for 1d4 hours. It truthfully answers all questions you ask and aids you in any way it can as long as doing so does not risk its life or property. While the target is under this effect, you gain a +5 power bonus to Bluff checks against it.

This effect ends if you or any of your allies attacks the target or any of its allies. Afterward, the target doesn't remember that you used this power on it.

Additional Effects

Wizard Utility 2

Used ☐

Maze of Mirrors

Encounter ♦ Standard action

Utility Staff +3: +16 vs. Will, damage

Area burst 1 within 10 squares **Target:** Each creature in the burst

You envelop your enemies in an illusory labyrinth of mirrors, which conceals the world around them.

Keywords: Arcane, Illusion, Implement

Attack: Intelligence vs. Will

Hit: The target is immobilized and takes a -4 penalty to attack rolls until the end of your next turn.

Miss: The target is slowed until the end of your next turn.

Additional Effects

Wizard Attack 3

Used ☐

Blissful Ignorance

Encounter ♦ Standard action

Area burst 2 within 10 squares **Target:** Each creature in the burst

A tangle of fey magic soothes and distracts your enemies, leaving them vulnerable as they chase after pleasant dreams.

Keywords: Arcane, Charm, Enchantment

Effect: Each target is slowed and can't take opportunity actions or immediate actions until the end of your next turn.

Additional Effects

Wizard Attack 3

Used ☐

Phantasmal Assailant

Daily ♦ Standard action

Utility Staff +3: +16 vs. Will, 2d10+9 damage

Ranged 20 **Target:** One creature

You craft an elaborate image of a deadly assassin whose blade cuts deeply into your foes.

Keywords: Arcane, Illusion, Implement, Psychic

Attack: Intelligence vs. Will

Hit: 2d10 + Int modifier (+6) psychic damage.

Effect: The target takes ongoing 5 psychic damage and grants combat advantage to all your allies (save ends both).

Additional Effects

Wizard Attack 5

Used ☐

Tasha's Forcible...

Daily ♦ Standard action

Utility Staff +3: +16 vs. Will, damage

Ranged 10 Target: One enemy

By digging deep into an enemy's mind, you unleash crippling pain that causes it to lash out blindly.

Keywords: Arcane, Charm, Enchantment, Implement

Attack: Intelligence vs. Will

Hit: The target is stunned until the start of your next turn. This effect also ends if the target is attacked.

Aftereffect: The target makes a basic attack against a target of your choice as a free action.

Miss: The target is dazed until the end of your next turn. This effect also ends if the target is attacked.

Additional Effects

Wizard Attack 5

Used ☐

Dispel Magic

Encounter ♦ Standard action

Utility Staff +3: +16 vs. the Will defense of the creator of the conjuration or the zone, damage

Ranged 10 Target: One conjuration or zone

You unleash a ray of crackling arcane energy that destroys a magical effect created by an opponent.

Keywords: Arcane, Implement

Attack: Intelligence vs. the Will defense of the creator of the conjuration or the zone

Hit: The conjuration or zone is destroyed. All its effects end, including those that normally last until a target saves.

Additional Effects

Wizard Utility 6

Used ☐

Dimension Door

Daily ♦ Move Action

Personal

You trace the outline of a doorway in front of you, step through the portal, and reappear somewhere else nearby.

Keywords: Arcane, Teleportation

Effect: You teleport up to 10 squares.

Additional Effects

Wizard Utility 6

Used ☐

Enemies Abound

Encounter ♦ Standard action

Utility Staff +3: +16 vs. Will, 2d8+9 damage

Area burst 1 within 20 squares Target: Each enemy in burst

You weave a veil of illusion over the eyes of your enemies, causing them to view their allies as threats.

Keywords: Arcane, Illusion, Implement, Psychic

Attack: Intelligence vs. Will

Hit: 2d8 + Int modifier (+6) psychic damage, and you and your allies can treat the target as an ally for the purposes of flanking until the end of your next turn.

Additional Effects

Wizard Attack 7

Used ☐

Charm of the Defender

Encounter ♦ Standard action

Utility Staff +3: +16 vs. Will, damage

Ranged 10 Target: One enemy

You weave a skein of deceitful magic, tricking your foe to become a hero to its enemies.

Keywords: Arcane, Charm, Enchantment, Implement

Attack: Intelligence vs. Will

Hit: You slide the target up to 3 squares, and it is immobilized until the end of your next turn. Also until the end of your next turn, when an enemy starts its turn adjacent to the target, the target makes a melee basic attack against that enemy as a free action. The target gains a power bonus to the attack roll and the damage roll equal to your implement's enhancement bonus.

Miss: You slide the target up to 3 squares.

Additional Effects

Wizard Attack 7

Used ☐

Potion of Healing (heroic tier)

Potion ♦ Level 5

Power (Consumable * Healing): Minor Action. Drink this potion and spend a healing surge. Instead of the hit points you would normally regain, you regain 10 hit points.

Taunting Phantoms

Daily ♦ Standard action

Utility Staff +3: +16 vs. Will, damage

Area burst 1 within 10 squares Target: Each creature in burst

Your foes are beset by tormenting images that dart among them, daring them to attack and driving them to lash out with reckless abandon.

Keywords: Arcane, Illusion, Implement

Attack: Intelligence vs. Will

Hit: The target makes a melee basic attack roll against a creature of your choice, including itself.

Effect: The target takes 5 damage each time it misses with a melee attack (save ends).

Additional Effects

Wizard Attack 9

Used ☐

Symphony of the Dark...

Daily ♦ Standard action

Utility Staff +3: +16 vs. Will, damage

Area burst 2 within 20 squares Target: Each enemy in the burst

Your magic unleashes an echoing song of the Feywild, corrupting your enemies in body and mind even as it grants your allies a burst of battle frenzy.

Keywords: Arcane, Enchantment, Implement

Attack: Intelligence vs. Will

Hit: The target is dazed and immobilized (save ends both).

Miss: The target is dazed until the end of its next turn.

Effect: Each ally in the burst can shift up to 4 squares as a free action and gains a +4 power bonus to damage rolls until the end of your next turn.

Additional Effects

Wizard Attack 9

Used ☐

Arcane Gate

Daily ♦ Minor Action

Ranged 20

You open a dimensional rift connecting two nearby locations.

Keyword: Arcane

Effect: You create a dimensional rift between two unoccupied squares in range. The rift lasts until the end of your next turn. Until the rift ends, the two squares are effectively adjacent to each other, but for movement only.

Sustain Minor: The rift persists until the end of your next turn.

Additional Effects

Wizard Utility 10

Used ☐

Mass Resistance

Daily ♦ Minor Action

Close burst 10

Target: You and each ally in burst

You wrap arcane strands about yourself and all your allies, insulating all against a particular type of damage.

Keyword: Arcane

Effect: Choose acid, cold, fire, force, lightning, necrotic, poison, psychic, radiant, or thunder. Until the end of the encounter, each target gains resistance to that damage type equal to 5 + your Int modifier (+6).

Additional Effects

Otto's Twisting Tune

Encounter ♦ Standard action

Utility Staff +3: +16 vs. Will, damage

Ranged 10

Target: One enemy

Your magic reaches deep into the target's heart and mind to twist its allegiances.

Keywords: Arcane, Charm, Enchantment, Implement

Attack: Intelligence vs. Will

Hit: You slide the target up to its speed. The target then makes a melee basic attack against a creature of your choice as a free action. The target gains a power bonus to the attack roll and the damage roll equal to your implement's enhancement bonus.

Effect: The target is dazed until the end of your next turn.

Additional Effects

Enigmatic Spellcasting

Encounter ♦ Minor Action

Personal

You reach into the weave of arcane energy and exchange the magic of one spell for another.

Keyword: Arcane

Effect: Choose an unexpended wizard daily utility power that you have prepared. You instantly prepare a different wizard daily utility power in its place. The new power must be from your spellbook and of the same level as the old power.

Additional Effects

Wizard Utility 10

Used ☐

Enigmatic Mage Attack 11

Used ☐

Enigmatic Mage Utility 11

Used ☐

Utility Staff +3

Staff ♦ Level 12

Enhancement: +3 attack rolls and damage rolls

Critical: +3d6 damage

Property: Increase the range of your arcane utility powers by a number of squares equal to this staff's enhancement bonus.

Amulet of Protection +3

Neck Slot Item ♦ Level 11

Enhancement: +3 Fortitude, Reflex, and Will

Sylvan Cloth Armor (Basic...)

Armor ♦ Level 8

Enhancement: +2 AC

Property: Gain an item bonus to Athletics checks and Stealth checks equal to the armor's enhancement bonus.

Diadem of Acuity (heroic tier)

Head Slot Item ♦ Level 8

Property: You gain a +2 item bonus to Insight checks and Perception checks.